



HESSLE

TOWN COUNCIL



Issue 116 – September 2024

TOWN COUNCIL NEWSLETTER



INSIDE THIS EDITION...

Hessle West Open Gardens **Page 3**



**HESSLE'S
CREDIT UNION**

Page 4



**HESSLE
CHILDREN'S
TRAIL
2024**

Page 7



**HESSLE
SPORTIVE**

Page 10

**...PLUS SO
MUCH MORE!**

*Caring for your
Sight and Hearing*

Specsavers

Hessle

**44 – 48 Prestongate
Hessle, HU13 0RE**



(01482) 640971



HESSLE WEST OPEN GARDENS 2024

— Our 30th Anniversary —

We are (with a few exceptions), the Hessle West Open Gardeners and family/helpers of the gardeners, and we would like to say a huge thank you to everyone who helped make this year's event on 19th May such an amazing day. Thank you to those who came



and bought tickets, plants, food, drinks, books, pottery, put up posters, drove the minibus, said nice things and spread the word about this wonderful community event which raises money for local charities. Special thanks also go to the sun which made a rare and rather spectacular appearance, shining all day without a cloud in the sky!

As it was our 30th anniversary, we hoped it would be our best and it really was! We raised a spectacular £11,260 which was shared at our cheque presentation event in mid-July. We always donate half the money raised to Dove House Hospice and the rest is split between different nominated local charities each year. This year we were delighted to support the Hesse Hedgehog Hospital, Hesse Scouts, The Hesse and Anlaby Food Bank, Rooted in Hull, Hesse Community Centre, the Fire Fighters Charity, FIND3, Let's Play Toddler Group and the Friends of Tranby Gate Woodland and Wildlife Haven.

Please put next years' event in your diaries – we normally open our gardens on the 3rd Sunday in May (actual date TBC) and if anyone would like to find out more or get involved in any way, please contact Victoria on 07973 915692. Please also consider following us on Facebook @hesslewestopengardens for updates and information about Hesse West Open Gardens 2025.

REPORT EVERY CRIME, EVERY TIME

Make The Right Call @humberbeat

| | | |
|--|--|---|
| <p>999</p> <p>There is a danger to life A crime is in progress or has just happened A dangerous incident on the roads Suspicious incident that needs immediate attention Immediate action is required to save lives, stop injury or catch criminals</p> | <p>101</p> <p>To report a crime NOT ongoing Give us information about crime or concerns in your local area General enquiries To discuss anti-social behaviour or other non-urgent matters</p> | <p>ONLINE</p> <p>humberbeat.police.uk Report a crime Record an incident Request an update Advice and information</p> |
|--|--|---|

Receive real time alerts about what's happening in your area MyCommunityAlert.co.uk

Following the annual Town Council meeting, attended by Humberside Police, it became evident that many residents are concerned about anti-social behaviour occurring in and around Hesse. Inspector Matt Wilson highlighted that only a fraction of these incidents are actually being reported. He stressed the importance of reporting every single incident, no matter how small, to provide a true reflection of the crime level in the area. This accurate reporting helps build a case for assigning more resources to Hesse, a need strongly felt by the residents.

Anti-social behaviour takes many forms, including aggressive, noisy, or abusive behaviour, neighbourhood disturbances involving drugs, abandoned cars, or animals. As a reminder, if someone is injured or there is immediate danger or a risk to public safety, always call 999. For incidents that are NOT ongoing, please report them by calling 101. Alternatively, you can log them online. Your vigilance and cooperation are crucial for making Hesse a safer place for everyone. Report every crime, every time.

HESSLE'S CREDIT UNION

Hessle's Credit Union Branch is making a real impact one year on.

The group of volunteers who provide a weekly HEY Credit Union contact point at Hessle Town Hall to help local residents access safe savings accounts, affordable credit and other money well being services, are delighted with progress made in their first year.

Hessle's own Credit Union branch opened in April 2023 and has operated from the Town Hall every Tuesday from 10 am to 12 noon, even during building renovations.

During the past year they have welcomed 61 new members across the HU13 area, an increase of 60%. Savings accumulated by local members have risen by £13k to £151,607, despite cost of living pressures making it harder for some to save. As well as Ready Access Saver accounts, HEY Credit Union's unique Christmas Saver account, which locks funds safely out of temptation's way until the festive season, has proved especially popular in Hessle. All members' savings are FSCS protected, the same as with banks and building societies.

Loan numbers and balances in HU13 have also grown as people have discovered affordable Credit Union products to help them spread the cost of major purchases over sensible periods, without resort to high-cost credit such as doorstep and payday lenders. These include personal loans (large or small), family benefit plans, consolidation loans, green loans and matched loans. All are tailored to the individual's situation and always decided by a trained human underwriter not a computer.

20 new Hessle members have already earned £25 starter bonuses funded by the Stop Loan Sharks team and savers were rewarded with 2.1% dividends last December.

Local Credit Union volunteer Andrew Penny says: "Having publicised our Town Hall service from day one, we want Hessle residents to know that we continue to be here for you every week, if you wish to drop in and ask about Credit Union services, become a member, check your accounts or arrange transactions. We can also show you how to apply online if that is preferred.

"If you would like to find out more, do pop in one Tuesday. We aim to offer a warm welcome (including tea or coffee) and a friendly, personal service, with all interactions treated with the utmost confidentiality."



This year sees HEY Credit Union celebrating its 25th Anniversary. Since 1999 its 18,000 members are estimated to have saved at least £25 million in interest charges, as well as earning £1.6 million in saver dividends. This money has stayed in the local economy rather than ending up in the City of London or as banker's bonuses. HEY Credit Union is part of a worldwide 'family' of credit unions, all owned co-operatively by the people who use them, with service not profit as their guide.

HEY Credit Union wishes to thank Hessle Town Council and Hessle & Anlaby Food Bank for helping them to establish their new Hessle branch. HEY Credit Union is authorised and regulated by the Prudential Regulation Authority and the Financial Conduct Authority – reference 213620.

Web: www.hullandeycu.co.uk

Tel: 01482 778753

(Mon-Fri: 10.00 a.m. to 3.30 p.m.)

ADVERTORIAL – CAN YOU HELP TO TELL THE HISTORY OF HESSLE?

How your farmland, business' open space or back garden can help the Hessle History Hunter unearth the mysteries beneath our feet

Over the last year, I have been working with local landowners, businesses and residents on an exciting new project – unearthing the history that lies beneath our feet! Now I am appealing for more locals to volunteer and get involved!

As an enthusiastic historian and active member of the Hessle History Society as well as a recreational metal detectorist, I am keen to tell the story of the town, its buildings and its people in a unique way – using objects found with a metal detector.

The ultimate ambition is to uncover enough varied material for a book – 'A History of Hessle in 10 (or maybe more) Finds'. This piece of writing would take each historic object, all found in the ground in and around the town itself, as a starting point for explaining a period of history and the specific local circumstances of that time, including:

- How a coin from the reign of Henry III informs our learning about Hessle's origins, local medieval agricultural practices and the history of Humber crossings.
- What 17th and 18th Century coins tell us about the political and religious turbulence of the time, the economic impact that the local population felt in their pocket, and the region's connection to 'King Billy'.
- How Royal commemorative medals illustrate how our local communities come together to celebrate, the establishment of Hull's public parks and the disruption caused by general strikes on local railways as well as Hessle and Hull docks.
- Why a military badge and spent ammunition might take us back to a founding father of one of our region's most significant regiments and remind us of the tragedies of the First World War.
- What a bracelet associated with the World War Two Dutch resistance movement tells us about our region's links with the continent, refugees and prisoners of war.
- How children's lost toys tell us a sombre story of our town's youngest residents as well as the philanthropic intentions of its leading businessmen

I have been hugely grateful to those who have let me search their land in order to find these unique objects which unlock remarkable and personal stories. But in order to ensure that I have accurately represented the area and provided a cross-section of its history, I need more local land to be volunteered!

If you have, or know anybody who has farmland, open space or a large garden which you're happy to let me access for this project please let me know. I am fully licenced and insured via the National Council for Metal Detecting, leave all land how I find it and even dispose of litter I find on the way. You can email me on hesslehistoryhunter@gmail.com or follow me on my facebook page, Hessle History Hunter.

***Metal detecting on land where permission has not been granted is a crime!**



EXCITING NEWS!

Hessle Town Council joins Social Media

Follow Us!



We are thrilled to announce that Hessle Town Council has joined the world of social media to keep our community better informed and engaged! You can now stay up-to-date with all the latest events, important information, and news about our local area by following us on Facebook, Instagram, and X (formerly Twitter). Join us online and be a part of the conversation. Your voice matters, and together, we can make Hessle an even better place to live!

Where to find us:

Facebook @hessletowncouncil | Instagram @hessletowncouncil | X (formerly twitter) @hesslecouncil

TRANBY GATE WOODLAND & WILDLIFE HAVEN PUBLIC CONSULTATION

Tranby Gate is a small but beautiful wilderness of mature British trees and natural spaces Located at the junction of Ferriby Road & Heads Lane. It supports a wide range of flora and fauna and is a hidden natural gem in our town.

The Friends of Tranby Gate (local volunteers) was established with the aim of garnering support to protect this special place from being built on.

It is currently owned and managed by East Riding Council (who have no immediate plans to develop this area for housing (it is not in the ERYC development plan over the next ten years).

Hessle Town Council has been asked by the Friends of Tranby Lodge to take over ownership and management of the site, this will incur costs to the taxpayers of Hessle, which is why we are asking you the residents for your opinions.

A tree survey has been carried out which informs us that the cost of maintaining the trees and other smaller remedial work will run into thousands of pounds.

That said it is a lovely community resource which has seen many generations of Hessle residents enjoy its many splendours.

Should you the residents of Hessle agree that the Town Council should take overall control of Tranby Gate it would safeguard its future inperpetuity.

Please scan the QR code to complete the survey or fill in the slip and drop in to the Town Hall. Paper copies of the survey can be obtained from the Town Hall or posted out by calling the office on 01482 648566

Please submit your response by 16/11/2024



1. I would like Hessle Town Council to take over the running of Tranby Gate from East Riding Council

Yes No

2. Name and Address

3. Additional Comments



VisionPrint

159 Hessle Road Hull, HU3 2AF (within Topcolor)



07932 524456

[e vpprintanddesign@hotmail.com](mailto:vpprintanddesign@hotmail.com)

[w www.visionprintanddesign.co.uk](http://www.visionprintanddesign.co.uk)

For All Your Print Requirements

LITHO & DIGITAL PRINT SPECIALISTS

HESSLE CHILDREN'S TRAIL 2024

A fun-filled Community Event

This summer, the Hesse Children's Trail 2024 transformed the town into an exciting jungle themed safari adventure. From July 22nd, families explored the town centre, searching for 20 wild animals hidden in shop windows. The event, organised by Hesse Town Council, in collaboration with All Saints Junior School and local businesses, aimed to offer families a fun, free activity during the school holidays while boosting footfall in local shops. The first 500 people to complete the trail received a small prize and everybody who participated was entered into the prize draw to win one of two star prizes, make sure you check out our social media to find out who won!



Participants praised the trail for its community spirit. One local family remarked, "We found shops we didn't even know existed," while another appreciated the lively atmosphere, saying, "It's great to see so many people in the town centre, we hope you do it again next year." One retailer told us "we have been unusually busy for the summer holidays"

Sarah Rowland, the Town Council's Events and Town Centre Officer shared her excitement: "The children's trail has been a real community effort. We were thrilled to welcome families to explore our town and discover everything Hesse has to offer."



Upcoming Events

Hesse town Council are busy filling the diary up with some fantastic events. For the most up-to-date information follow us on social media @hessestowncouncil

November
11



Remembrance Sunday.

Details TBC - Visit www.hessestowncouncil.gov.uk for more information.

November
29



Hesse Christmas Lights Switch On.

Get ready for an evening of festive entertainment at the 2024 Hesse Christmas Light Switch On. With staged performances, a Christmas market, rides and entertainment, there's something for the whole family to enjoy.

November
30



Bay City Rollers at Hesse Town Hall.

Journey back in time to those carefree days of the 70's when Scotland's original boy band ruled the charts. Selling over 300 million albums worldwide, the Bay City Rollers attracted fans of all ages and a phenomenon known as Rollermania swept across the globe.

December
6th-8th



Dick Whittington Pantomime at Hesse Town Hall.

Hesse Theatre Company's famous sell-out pantomime is back for 2024! 'Dick Whittington and Diddles the Cat' is the purr-fect family pantomime coming to Hesse Town Hall 6th-8th December.

PRIORY PARK SINGERS

The Hessle-based Priory Park Singers have been celebrating their 20th anniversary with a packed concert. The versatile choir – who sing everything from Handel to Queen – held a cabaret-style afternoon at Tower Hill Methodist Church, in Hessle, on April 6th. The quick-moving show included choral pieces, solos and monologues in the relaxed atmosphere of an afternoon tea.

Chairman Rod Crocker says: "The emphasis of Priory Park Singers is on entertainment. A typical programme might include a rousing spiritual, a beautiful choral work, numbers from great shows, such as West Side Story and Oklahoma, followed by Elvis, Abba and Freddie Mercury. The performance is enhanced by solos and even a witty (sometime risqué!) story in East Riding dialect by a former Mayor of Hessle, Phil Davison."

The singers frequently perform at residential homes. Carers appreciate how pop songs from the 50s and 60s can awaken memories, particularly in those suffering from dementia. "Someone apparently unresponsive will suddenly recognise a melody and we make sure they've plenty of opportunities to join in," says Rod.

The choir's musical director, Michael Waltham, welcomes new recruits. You don't need to be able to read music. Rehearsals are on Wednesday evenings at Tower Hill Methodist Church Hall.

If you want to join, or book the choir, contact secretary Jenny Riddle on 01430 471277.



The Hessle Theatre Company pantomime is BACK...

FUR REAL!

Dick Whittington & Diddles the Cat

6-8 December 2024
Hessle Town Hall

TICKETS ON SALE NOW

www.hessletheatre.co.uk

Tickets
£10 Adults
£5 Children *
* under 16

the



place

INDEPENDENT OPTICIANS

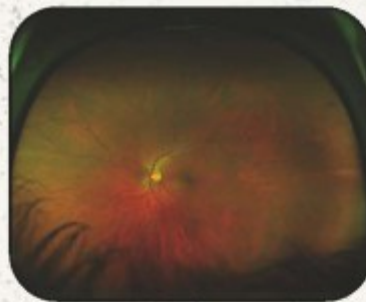
The Eye Place, Hessle (inc. Bush the Opticians)
Since 1865 there have been five generations of the Bush family testing eyes and making spectacles in Hull. Over that period of time, the ethos of providing a high level of eyecare and attention to detail has never changed.

Bush the Opticians, Hessle has recently been integrated into The Eye Place, offering the same unrivalled quality of eye examinations and products as it's other practices around the country

The Eye Place has invested heavily in state of the art technology. Unrivalled by other local opticians in the level of eye care that we offer.

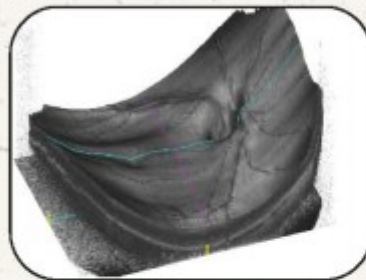


Optomap is a digital retinal scanner, not to be confused with cameras, which captures images of the up to 85% of the retina. It is a comfortable, painless, non-invasive process, that takes a fraction of a second, taking a scan of the back of the eye. It can also indicate evidence of non-eye diseases, such as diabetes, hypertension and certain cancers.



Optomap Image

OCT is a non-invasive imaging scan that uses light waves to take 3D and cross-sectional images of your retina. This enables us to detect very early signs of eye diseases such as glaucoma and macula degeneration.



OCT Image

Myopia Management ● Sports Vision ● Deep Eye Scanning ● Varifocal Specialists ● Contact Lenses

OPENING TIMES

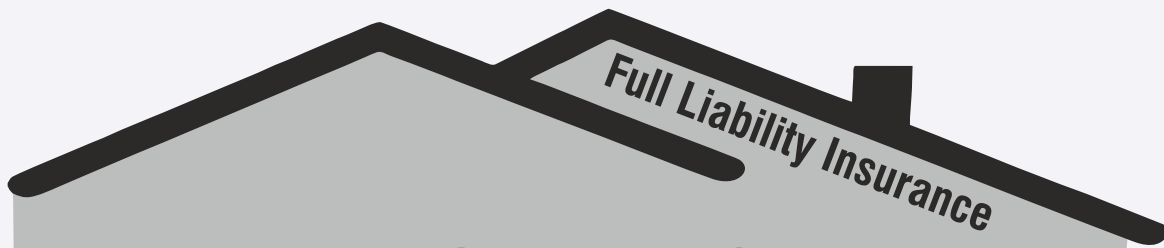
MONDAY: 09:00 - 17:30
TUESDAY: 09:00 - 17:30
WEDNESDAY: 09:00 - 17:30
THURSDAY: 09:00 - 17:30
FRIDAY: 09:00 - 17:30
SATURDAY: 08:30 - 16:00
SUNDAY: CLOSED

18 THE WEIR, HESSLE HU13 0RU
HESSLE@THE-EYE-PLACE.CO.UK
01482 648919

BOOK AN EYE EXAM

FULLY QUALIFIED EYECARE
PROFESSIONAL IN PRACTICE SIX
DAYS A WEEK





DAVE CRAWSHAW

Roofing Specialist

- New Roofs
- Gutters
- Roof Repairs
- PVCu Fascias
- Flat Roofs
- Fibreglass Roofs
- Loft Conversions
- Insurance Work
- All Work Guaranteed
- Over 35 Years Experience

– Beat any genuine quote on new roofs –

CALL NOW FOR A FREE QUOTATION
DAVE/SERENA - 01482 646307/07966 412561
23 Northfield Avenue, Hessle, HU13 9DJ

HESSLE SPORTIVE

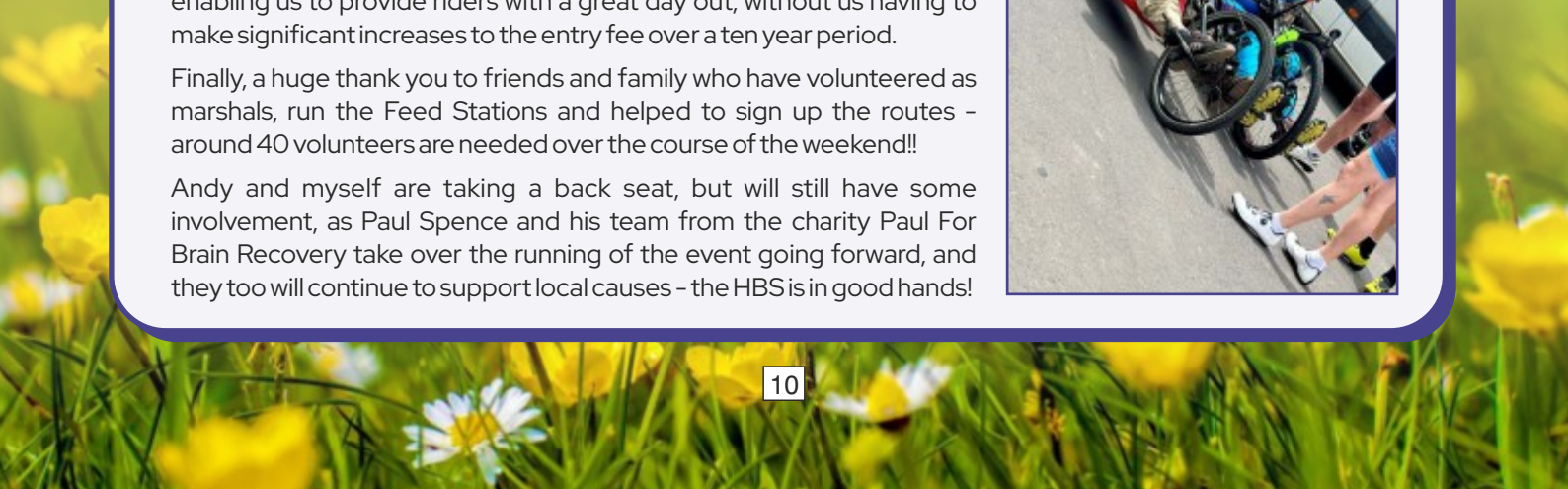
June 23rd marked the 10th anniversary of the HBS charity cycle sportive. Set up in 2014, the ride has now generated over £120,000, which has been shared out amongst more than 25 local charities; additionally, lots of individuals and groups use the ride as a vehicle to raise money for causes close to their heart, so the grand total is impossible to estimate.

Based in the wonderful grounds of the Hesslewood Office Park, the HBS has attracted around 4,500 cyclists from all over the country, and we are particularly grateful to the loyal core of cyclists who have returned year after year, and who are one of the main reasons why the event is well known for its friendly atmosphere.

In addition, we have received terrific support from a number of local businesses who have supported us in a variety of different ways, enabling us to provide riders with a great day out, without us having to make significant increases to the entry fee over a ten year period.

Finally, a huge thank you to friends and family who have volunteered as marshals, run the Feed Stations and helped to sign up the routes - around 40 volunteers are needed over the course of the weekend!!

Andy and myself are taking a back seat, but will still have some involvement, as Paul Spence and his team from the charity Paul For Brain Recovery take over the running of the event going forward, and they too will continue to support local causes - the HBS is in good hands!



**IN NEED OF LEGAL
ADVICE?**

Emma Louise Law

QUALIFIED AS A SOLICITOR SINCE 2007
WITH MANY YEARS EXPERIENCE IN LEGAL
PRACTICE

SPECIALISING IN:

- Wills
- Trusts
- Lasting Power of Attorney
- Tax Planning
- Care Fee Planning



07871675939
Emmalouise@Ellaw.co.uk
Emmabelli71@gmail.com



Arthur, an 85 year old walking football player for Hessele Sporting Club and also a keen gardener, travels from Beverley with his wife Gwen to help make sure that the grounds entrance to the King George V playing fields look smart. A big thank you to Art and Gwen, from us all at Hessele Sporting Club and the Hessele community.



£300 raised from church donations and the raffle held at the Mayors Civic Service which took place on Sunday the 11th of February. The grand total was £600 and was split between Humber Rescue and MIND.

How well do you know Hessele?

| | | | | | | | | | | | | | |
|---|---|---|---|---|---|---|---|---|---|---|---|---|---|
| Q | S | D | S | O | W | E | Y | B | D | A | A | S | K |
| C | O | R | L | R | T | O | A | E | A | T | E | T | I |
| S | U | E | R | W | R | V | N | V | O | H | R | Y | N |
| P | T | N | E | I | I | O | E | R | E | A | A | G | |
| I | H | A | V | N | N | D | R | R | D | H | U | C | S |
| C | L | L | O | D | I | A | T | L | R | O | Q | A | T |
| E | A | T | R | M | T | O | H | E | O | U | S | S | O |
| R | N | S | G | I | Y | R | G | Y | C | R | E | T | N |
| C | E | R | L | L | G | Y | A | R | C | N | L | L | A |
| R | I | I | L | L | R | R | T | O | A | E | S | E | V |
| O | C | F | I | W | O | R | E | A | N | A | S | W | E |
| F | T | T | J | A | V | E | I | D | O | P | E | A | N |
| T | Y | D | G | Y | E | F | T | Y | B | G | H | Y | U |
| R | I | C | H | M | O | N | D | R | O | A | D | I | E |

THE HOURNE | SPICER CROFT | RICHMOND ROAD
BEVERLEY ROAD | CASTLE WAY | FIRST LANE
WINDMILL WAY | KINGSTON AVENUE | HESSELE SQUARE
SOUTH LANE | FERRY ROAD | BON ACCORD ROAD
TRINITY GROVE | NORTHGATE | JILL GROVE

Play this puzzle online at: <https://thewordsearch.com/puzzle/7126163>

HESSLE TOWN COUNCIL

Town Hall, South Lane, Hessle, East Yorkshire, HU13 0RR

Contact:

Mrs. Kim Cooper – Town Clerk

Mrs. Joanna Render – Assistant Town Clerk

Tel/Answerphone: (01482) 648566 • Email: htc@hessletowncouncil.gov.uk

Caretaker: Mr. George McNeil – Tel/Answerphone: (01482) 648966

The office is open Monday to Friday and if you wish to visit please call between the hours of 10.00 a.m. and 12 noon.

The Council also offers photocopying facilities at 5p per b/w copy and 10p per colour copy, available Tuesdays and Wednesdays only between 10.00 a.m. and 12 noon.

Committee, Chairmen and Vice-Chairmen for the current municipal year

Planning and Traffic: Cllr. Nick Adams and Cllr. Phil Davison

Finance, Asset and Personnel: Cllr. Phil Davison and Cllr. Simon Pickering

Environment and Open Spaces: Cllr. Margot Sutton and Cllr. Paul Toogood

Events and Communications: Cllr. Simon Pickering and Charlie Walker

Tree Committee: Cllr. Margot Sutton, Cllr. John Bovill and Cllr. Phil Davison

**If you wish to contact your local Councillor directly,
please use the contact details below.**

Eastfield Ward

Cllr Ian Hardy – 01482 629552 / 07740 948817 / ianhardy@lilyvale80.karoo.co.uk

Cllr Hilary Hogan – 01482 627780 / 07920 005865 / hilary@mpdhogan.karoo.co.uk

Cllr Paul Toogood – 01482 641601 / 07882 047938 / toogoodpaul@gmail.com

Southfield Ward

Cllr Paul Hardy – 01482 627540 / 07810 878975 / hardypaul2023@gmail.com

Cllr Ross Harrison – 07780 113018 / rossharrison1985@gmail.com

Cllr David Nolan – 07966 226565 / david.nolan6344@gmail.com

Cllr Margot Sutton – 01482 644289 / megzak@megzak.karoo.co.uk

Northfield Ward

Cllr Nick Adams – 01482 645630 / nickad@nickad.karoo.co.uk

Cllr Simon Keillor – 07834 435044 / skeillor@gmail.com

Cllr Jayne Langdale – 07972 763775 / jayneowl77@gmail.com

Cllr Simon Pickering – 07496 546416 / simonbpickering@hotmail.com

Westfield Ward

Cllr John Bovill – 01482 641463 / 07739 353084 / johnbovill@hotmail.com

Cllr Steve Craggs – 07780 967524 / craggsy45@hotmail.co.uk

Cllr Phil Davison – 01482 647315 / 07919 082780 / philnliz@philnliz.karoo.co.uk

Cllr Charlie Walker – 07908 552306 / charsue6464@gmail.com

Chairman of the Council and Town Mayor – Councillor Steven Craggs

Vice-Chairman of the Council and Deputy Town Mayor – Councillor Jayne Langdale

Published and edited by
Hessle Town Council Communications Committee

The contents of any articles and advertisements
are the sole responsibility of the advertiser.

© Hessle Town Council - All rights reserved
www.hessletowncouncil.gov.uk

Printed by: Vision Print & Design
159 Hessle Road, Hull, HU3 2AF
(within Topcolor)

T: 07932 524456 | E: vpprintanddesign@hotmail.com
www.visionprintanddesign.co.uk

Delivered by Door to Door

If you would like to contribute to the newsletter and have any stories or articles that you would like to share, please contact the Clerk.